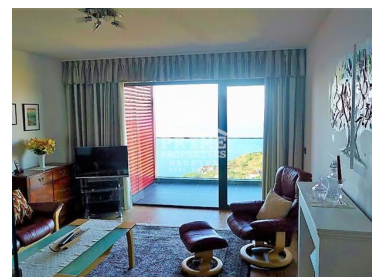




## Ponta do Sol - Apartment



Bedrooms



Bathrooms



Area (m²)



Garage

**250 000 €**

(EUR €)

## Ready for Occupancy! Luxury new apartments in the countryside for sale!

\* EXCLUSIVE \* EXCLUSIVE \* EXCLUSIVE \* EXCLUSIVE \* EXCLUSIVE \*

Brand new apartments for sale in Madeira, Ponta do Sol one of the world's most sought after locations and the perfect place for those seeking tranquillity. Contemporary in design and yet imbedded in a location with tradition and authenticity. Flooded with natural light the apartments face South and have magnificent views. Top, quality finishing's for a clean, minimalistic design. Close to public services and amenities and far from the hustle and bustle of the city. All rooms have good areas. Fully equipped kitchens offering every day modern convenience while still enjoying rural living! Schedule your viewing today!

T +351291624634 <sup>1</sup> · T +351968293752 <sup>2</sup> · E [info@primepropertiesmadeira.com](mailto:info@primepropertiesmadeira.com)

Estrada Monumental Nº 454 9000 098 Funchal  
AMI 11097

<sup>1</sup> (Call to national fixed network) | <sup>2</sup> (Call to national mobile network)



By appointment only!

## BY APPOINTMENT ONLY

For those considering an investment in a luxury residence as a second (holiday) home or as a retirement destination, consider the advantages that Madeira Island has to offer:

- Security, Madeira is virtually crime free and one of the safest holiday destinations in the world!
- Sub-tropical climate - warm & pleasant year round.
- Natural beauty - lush & colourful, known as the "Garden or Pearl of the Atlantic".
- Ease of access - within 3 hours flight time from most European cities, direct flights from over 40 destinations in Europe, daily flights to London and Lisbon.
- Protected environment - 70% of the island is protected parkland & forest.
- Activities/Amenities - wide range of sports & leisure activities; two Golf courses near to Funchal
- Tourist infrastructure - long known as a quality tourist destination, with lots to see & do
- Quality of life - a friendly, safe & clean place to visit and to live in.

### Legal and fiscal situation

- Property transfer taxes - IMT tax, Stamp duty, registration and notary fees - max. 7%
- Inheritance tax - Effective 1st January 2004, inheritance tax abolished in Portugal. There is still a 10% stamp duty charge though on transfer of assets. Gifts/donations to a spouse (husband or wife), children, parents or grandparents are exempt.
- Capital gains tax - Flat 25% tax levy on all capital gains effected by non-residents.
- Portuguese (EU) Residence Permit - Since July 2012, the NON-EU PURCHASER has a right to apply for a Portuguese residence permit (with subsequent freedom of movement in Schengen countries) following purchase of real estate in Portugal with A MINIMUM INVESTMENT OF €500.000
- Non-Habitual Resident's Regime - offering fiscal advantages particularly to non-Portuguese retirees taking up residence in Portugal

## ABOUT PRIME PROPERTIES MADEIRA REAL ESTATE

Discover the perfect home for you in Madeira, Portugal today!

Prime Properties Madeira Real Estate is a local, well-established, licensed, real estate agency providing a complete service to international buyers looking to invest in Madeira, Portugal whether for holiday homes or permanent living residence. Our properties include villas, houses, quintas, apartments, land and commercial properties. We also offer a PROPERTY FINDING SERVICE, working with a few select real estate agencies in Madeira to deliver a personalised service through the entire purchase process from viewings, negotiation, legal expertise, mortgages, relocation etc. We pride ourselves on working together to European standards of honesty, integrity and transparency. We provide excellent after sales service.

**T +351291624634 <sup>1</sup> · T +351968293752 <sup>2</sup> · E [info@primepropertiesmadeira.com](mailto:info@primepropertiesmadeira.com)**

**Estrada Monumental Nº 454 9000 098 Funchal  
AMI 11097**

<sup>1</sup> (Call to national fixed network) | <sup>2</sup> (Call to national mobile network)



## Property Features

- Proximity: Shopping, Public Transport, Schools
- Views: Countryside views
- Balcony
- Garage
- Energetic certification: B

**T +351291624634 <sup>1</sup> · T +351968293752 <sup>2</sup> · E [info@primepropertiesmadeira.com](mailto:info@primepropertiesmadeira.com)**

**Estrada Monumental Nº 454 9000 098 Funchal  
AMI 11097**

<sup>1</sup> (Call to national fixed network) | <sup>2</sup> (Call to national mobile network)