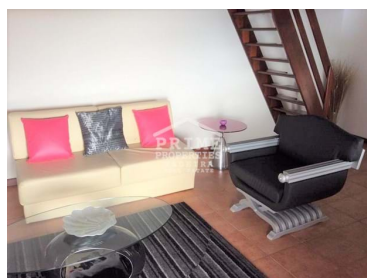




## Arco da Calheta - Villa



 **4** Bedrooms   
  **4** Bathrooms   
  **380** Area (m<sup>2</sup>)   
  **3800** Land Area (m<sup>2</sup>)   
 **350 000 €** (EUR €)

**Beautiful small farm house in Calheta, with a total area of 3800m2.**

\* EXCLUSIVE \* EXCLUSIVE \* EXCLUSIVE \* EXCLUSIVE \* EXCLUSIVE \*

Composed of 2 villas with two bedrooms in traditional stone. Fully equipped and furnished, ready to move in.

House "White house" - 2 bedrooms, 2 bathrooms, living room and kitchen.

House "Cream house" - 2 bedrooms, 2 bathrooms, living room and kitchen, pantry, and barbecue with bathroom.

Property with private entrance, gate with electric controls stone walls and handrail heater.

T +351291624634 <sup>1</sup> · T +351968293752 <sup>2</sup> · E [info@primepropertiesmadeira.com](mailto:info@primepropertiesmadeira.com)

Estrada Monumental Nº 454 9000 098 Funchal  
AMI 11097

<sup>1</sup> (Call to national fixed network) | <sup>2</sup> (Call to national mobile network)



Fabulous and definitive view to the sea and green areas.

The remaining land is excellent to build another 4/5 identical villas. With private road.

Project approved for rural tourism unit.

If you are looking for a property with these characteristics do not hesitate to contact me.

We also accompany you in the the whole buying process, from: simulations for bank credit, documentation, legal service, translation and others.

## Property Features

- Proximity: Schools
- Drive way
- Views: Sea views, Countryside views
- Energetic certification: E

**T +351291624634 <sup>1</sup> · T +351968293752 <sup>2</sup> · E [info@primepropertiesmadeira.com](mailto:info@primepropertiesmadeira.com)**

**Estrada Monumental Nº 454 9000 098 Funchal  
AMI 11097**

<sup>1</sup> (Call to national fixed network) | <sup>2</sup> (Call to national mobile network)