

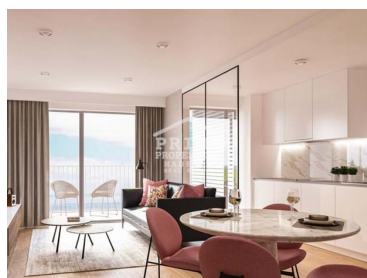
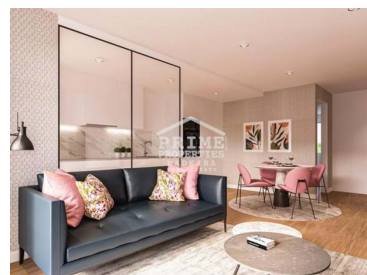


1243 - T2

Reference

Scan the QR code to view the property

Câmara de Lobos - Apartment



2

Bedrooms



2

Bathrooms



103

Area (m²)



103

Land Area (m²)

N/A

(EUR €)

New Apartments For Sale in Câmara de Lobos

Spectacular development in Câmara de Lobos

Located in the picturesque village of Câmara de Lobos this development will have one, two and three bedroom apartments for sale PLUS Penthouse Apartments! The apartments will have magnificent views to the Atlantic Ocean and Cabo Girão.

Within walking distances to shops, restaurants, coffee shops and public services.

Excavation started in September 2021 and the development is set to be complete in 2023.

Prices begin at

T +351291624634 ¹ · T +351968293752 ² · E info@primepropertiesmadeira.com

Estrada Monumental Nº 454 9000 098 Funchal

AMI 11097

¹ (Call to national fixed network) | ² (Call to national mobile network)



1243 - T2

Reference

Scan the QR code to view the property

One bedroom - 115 000€
Two bedroom - 179 000€
Three bedroom 220 000€
Penthouse - 600 000€

Câmara de Lobos is located just five kilometers from Funchal and is well known to the village that inspired Sir Winston Churchill to paint.

Schedule your viewing today!

NOTE: The areas indicated on the plan correspond to the usable areas of each space and are merely indicative and approximate to the final result. The images of the development presented here are merely visual anticipations of the final product. During the course of construction the development may, for technical or commercial reasons, undergo alterations or variations. The furniture and decorative items shown are merely indicative and are not included in the final product to be marketed. Price listed are of construction phase and are subject to change.

Property Features

- Private condominium
- Views: Sea views, Mountain views
- Video entry system
- Double glazing
- Walking distance to beach
- Uninterrupted views
- Balcony
- Drive way
- Frontline property
- Lift
- Main drainage
- Wifi Network
- Solar orientation: South

T +351291624634 ¹ · T +351968293752 ² · E info@primepropertiesmadeira.com

Estrada Monumental Nº 454 9000 098 Funchal
AMI 11097

¹ (Call to national fixed network) | ² (Call to national mobile network)